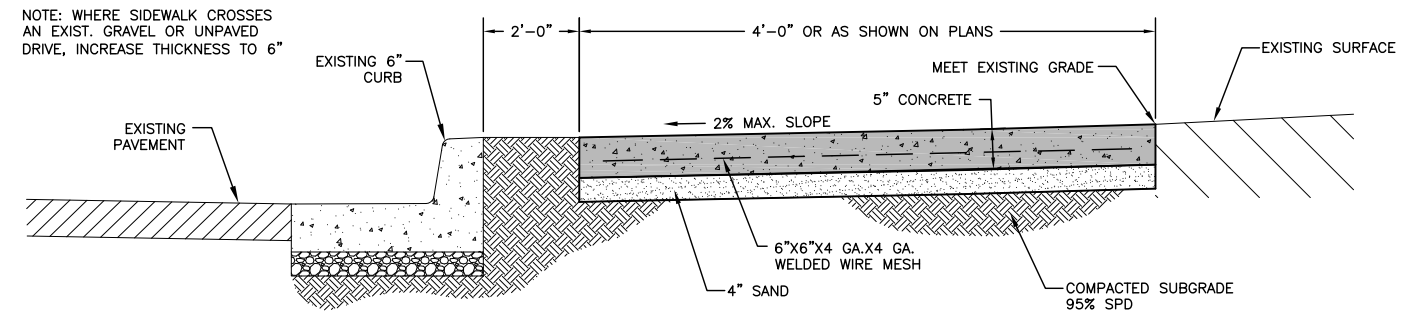
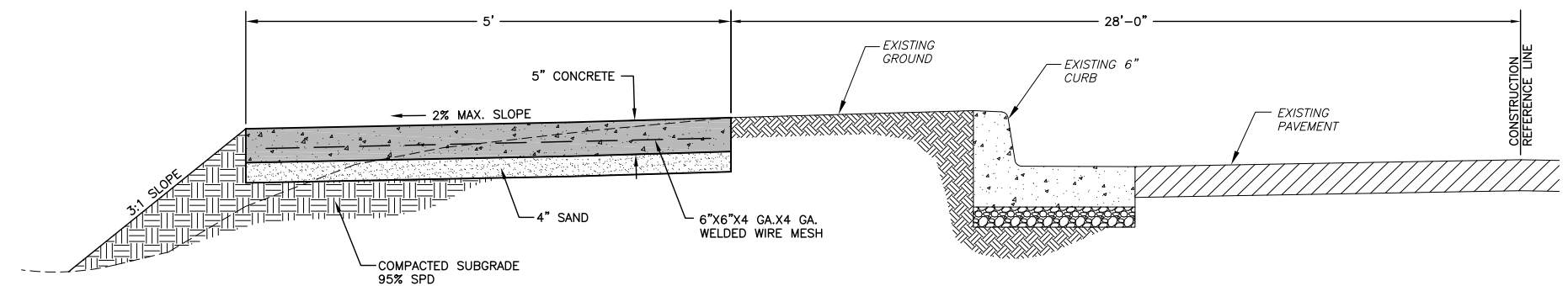


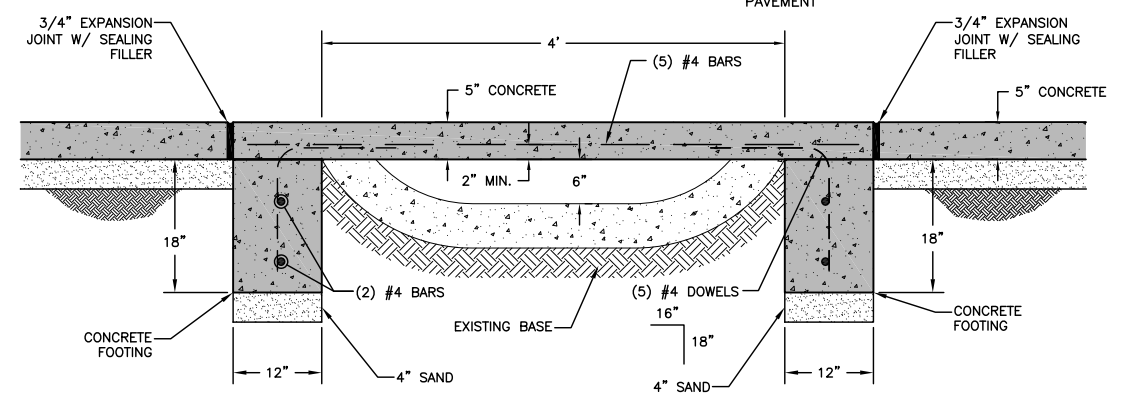
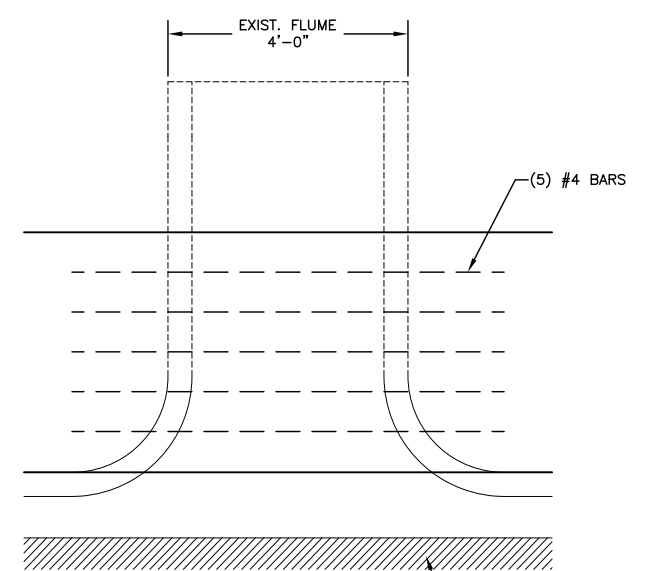
REVISIONS		
REV. NO.	DESCRIPTION	DATE



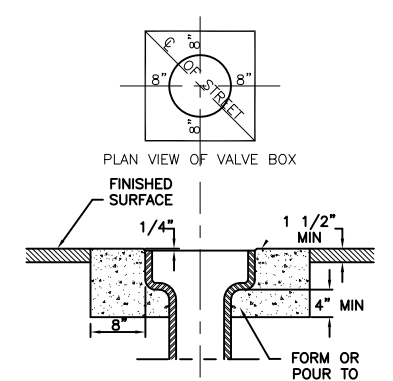
TYPICAL SIDEWALK SECTION
SCALE: 1"=1'



TYPICAL SIDEWALK SECTION - NON PARTICIPATING SECTION
SCALE: 1"=1'

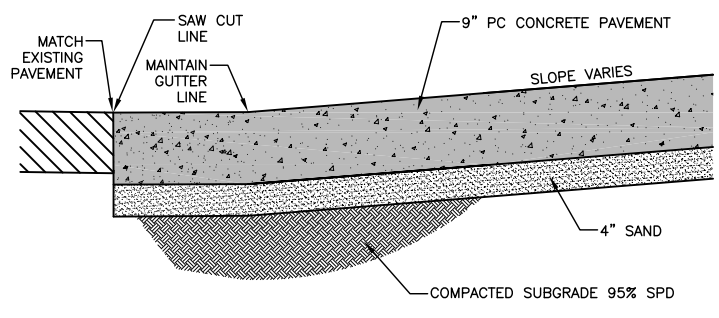


SIDEWALK CROSSING FLUME DETAIL
SCALE: N.T.S.

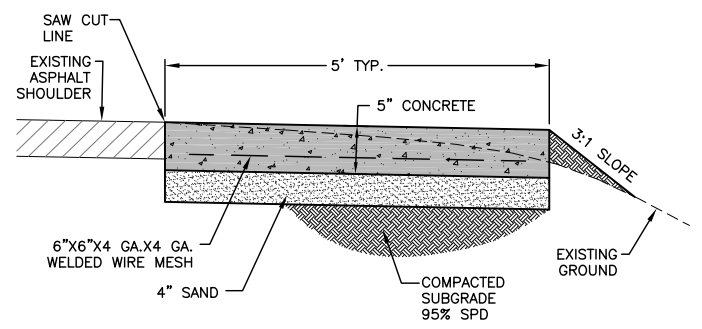


- NOTES:
1. THE VALVE BOX FRAME SHALL BE SET TO GRADE AND CONCRETE BASE POURED AHEAD OF RESURFACING OPERATIONS.
 2. CONCRETE BASE SHALL BE H.E.S. CONCRETE.
 3. THE WORK SHALL BE PROTECTED BY BARRICADES AND LIGHTS, ETC... AND SHALL NOT BE REMOVED FOR A PERIOD OF 72 HOURS AFTER THE POUR IS MADE.

ADJUSTMENT OF VALVE BOX TO GRADE



TYPICAL CONCRETE ROADWAY REPAIR
SCALE: N.T.S.



TYPICAL SIDEWALK SECTION
STA. 355+60.43 TO STA. 364+00.00
SCALE: N.T.S.

SULPHUR SIDEWALK IMPROVEMENTS TYPICAL SIDEWALK SECTIONS		Drawn	J ALEX	7/27/17
CITY OF SULPHUR BROADWAY - CHARLES F. COOPER MEMORIAL ROAD TO 18TH STREET		Design	WTM	7/27/17
STATE OF OKLAHOMA		Checked	WTM	7/27/17
DEPARTMENT OF TRANSPORTATION		JOB NO. 210101		SHEET NO. 5 OF 34

J:\Sulphur\210101\cadd\2017 Phase 1\210101_ttypsec 2.dwg, 8/10/2017 10:37:03 AM, JonA, 1:2